



English

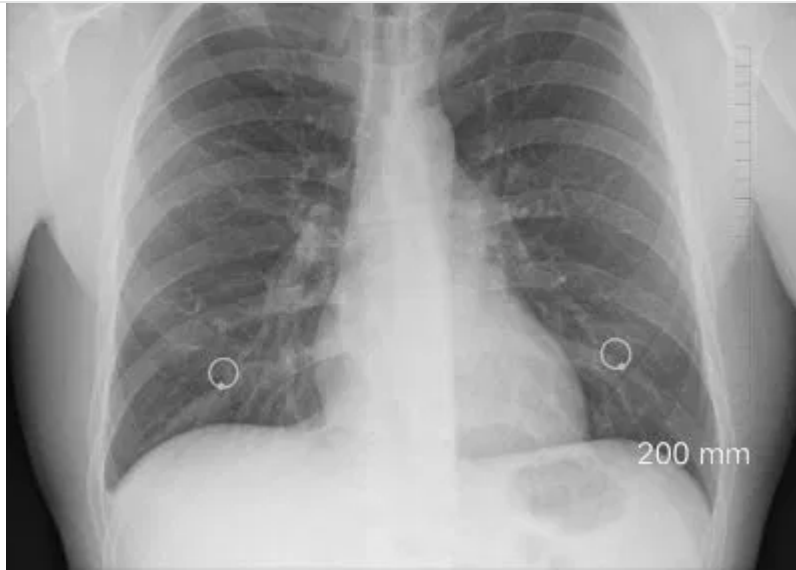


GEOPOLITIC

SARS-COV-2, SCIENCE

By GEOPOLITIC.ORG / FEBRUARY 4, 2021 @ 12:32 PM

LONG-TERM MASK USE MAY CONTRIBUTE TO ADVANCED STAGE LUNG CANCER, STUDY FINDS



A recent study in the journal Cancer Discovery found that inhalation of harmful microbes can contribute to advanced stage lung cancer in adults. Long-term use of face masks may help breed these dangerous pathogens.

Microbiologists agree that frequent mask wearing creates a moist environment in which **microbes are allowed to grow** and proliferate before entering the lungs. Those foreign microbes then travel down the trachea and into two tubes called the bronchi until they reach small air sacks covered in blood vessels called alveoli.

“THE LUNGS WERE LONG THOUGHT TO BE STERILE, BUT WE NOW KNOW THAT ORAL COMMENSALS—MICROBES NORMALLY FOUND IN THE MOUTH—FREQUENTLY ENTER THE LUNGS DUE TO UNCONSCIOUS ASPIRATIONS.” – LEOPOLDO SEGAL, STUDY AUTHOR AND DIRECTOR OF THE LUNG MICROBIOME PROGRAM AND ASSOCIATE PROFESSOR OF MEDICINE AT NEW YORK UNIVERSITY GROSSMAN SCHOOL OF MEDICINE

According to the **study**, after invading the lungs these microbes cause an inflammatory response in proteins known as cytokine IL-17.



WE WERE INTERESTED IN DETERMINING IF THE ENRICHMENT OF URAL COMMENSALS IN THE LUNGS COULD DRIVE AN IL-17-TYPE INFLAMMATION AND INFLUENCE LUNG CANCER PROGRESSION AND PROGNOSIS,” SAID SEGAL.

While analyzing lung microbes of 83 untreated adults with lung cancer, the research team **discovered** that colonies of Veillonella, Prevotella, and Streptococcus bacteria, which may be cultivated through prolonged mask wearing, are all found in larger quantities in patients with advanced stage lung cancer than in earlier stages. The presence of these bacterial cultures is also associated with a lower chance of survival and increased tumor growth regardless of the stage. **Corona Mask Mandates: Science or Political Dogma?**

Additionally, research into the cultivation of Veillonella bacteria in the lungs of mice found that the presence of such bacteria leads to the emergence of immune suppressing cells as well as inflammatory ones such as cytokine IL-17.

“GIVEN THE RESULTS OF OUR STUDY, IT IS POSSIBLE THAT CHANGES TO THE LUNG MICROBIOME COULD BE USED AS A BIOMARKER TO PREDICT PROGNOSIS OR TO STRATIFY PATIENTS FOR TREATMENT.” – LEOPOLDO SEGAL

As more evidence emerges pertaining to the long-term effects of mask mandates and lock downs, doctors and scientists are beginning to reconsider whether these authoritarian measures really are doing more harm than good. One Canadian public health expert named Dr. Aji Joffe **found in a related study** that lock downs cause “at least ten times” more damage than benefit.

In a recent working paper by researchers at Harvard, Duke, and John Hopkins Universities, **academics concluded** that “for the overall population, the increase in the death rate following the COVID-19 pandemic implies a staggering 0.89 and 1.37 million excess deaths over the next 15 and 20 years, respectively.”



English



oil and bacteria. This can be caused by either disposable or cloth masks.

Dentists have also been warning about a phenomenon known as 'mask mouth' in which patients are arriving back to the dental office with an increase in gingivitis and tooth decay as high as 50% in a period of just a few months since mask mandates began.

This discovery sheds light on the growing evidence of harm caused by long-term mask wearing.


Via <https://www.globalresearch.ca/long-term-mask-use-may-contribute-advanced-stage-lung-cancer-study-finds/5736339>



Like



3 bloggers like this.



GeoPolitic.org [ALL POSTS](#)

6

Comments

[ADD YOURS](#)



to life liberty and the pursuit of happiness and I am not able to be in charge of my own right

★ Loading...

2

Cliff W on February 8, 2021 at 7:59 pm Reply

I am sure all these chinese masks don't have any chemicals on them either....

★ Loading...

3

Ethel Lemond on February 8, 2021 at 8:21 pm Reply

I'm sure this will make all those advocating for mandatory mask to double down on their use and may explain why Fauci recommends more than one.

★ Loading...

4

Long-term Mask Use May Contribute to Advanced Stage Lung Cancer, Study Finds – geopolitic – SFWR on February 8, 2021 at 9:57 pm Reply

[...] A recent study in the journal Cancer Discovery found that inhalation of harmful microbes can contribute to advanced stage lung cancer in adults. Long-term use of face masks may help breed these dangerous pathogens. Microbiologists agree that frequent mask wearing creates a moist environment in which microbes are allowed to grow and proliferate before entering the lungs.... – Read on geopolitic.org/2021/02/04/long-term-mask-use-may-contribute-to-advanced-stage-lung-cancer-study-find... [...]

★ Loading...

5

Long-term Mask Use May Contribute to Advanced Stage Lung Cancer, Study Finds – geopolitic – Santa Fe World Review on February 8, 2021 at 9:58 pm

Reply

[...] A recent study in the journal Cancer Discovery found that inhalation of harmful microbes can contribute to advanced stage lung cancer in adults. Long-term use of face masks may help breed these dangerous pathogens. Microbiologists agree that frequent mask wearing creates a moist environment in which microbes are allowed to



lung-cancer-study-find... [...]

★ Loading...

6

dennisregan on February 9, 2021 at 3:16 am Reply

& here we have evidence – & people with COPD are being put at additional, extraordinary, risk. We knew then, and it has since been reinforced – that there were numerous palliatives and remedials – vitamins C, D, mineral Zinc, plus meds such as (no fits, please) Hydroxychloroquine, and another Sen. Johnson’s committee mentioned in it’s testimony & report from Dec 2020. All low cost – as opposed to the Big Pharma nonsense.

But we get to do this Devil’s dance macabre of masks, multiple masks, oh a cloth mask is as good as a N95 – oh, for Pete’s sake, what utter nonsense. Wear a diaper. What crap.

& now cancer??? Back in the 1930’s the British Medical Association had found asbestos causing mesothelioma. The American establishment covered that up for 40 years, finally getting around to admitting the obvious.

When will these evil people be held responsible? This is like the Nazi doctors in the camps or the organizers of the Tuskegee Syphilis experiments. When will we ever get justice???

★ Loading...



Leave a Reply

Enter your comment here...



English



Africa

Crypto

Eurasia

Finance

Military

SARS-COV-2

Videos

Americas

Economics

Europa

Medio Oriente

Oceania

Science

RECENT COMMENTS

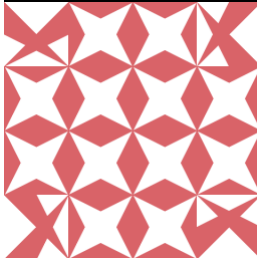


dennislregan on **Long-term Mask Use May Contrib...**



Long-term Mask Use M... on **Long-term Mask Use May Contrib...**

Long-term Mask Use M... on **Long-term Mask Use May Contrib...**

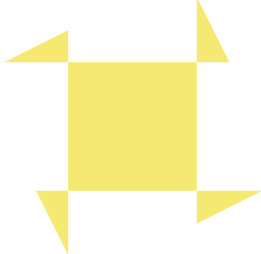


Ethel Lemond on **Long-term Mask Use May Contrib...**





Lisa Barrett on **Long-term Mask Use May Contrib...**



Wylcs on **ICU Nurse Whistleblower: Hospi...**



Mary Hollowell on **7 die at Spanish care home aft...**



Mary Hollowell on **7 die at Spanish care home aft...**



Barbara Zecher on **Implanted "Vaccine Package" ID...**





 English 



Enter your email address to subscribe to this blog and receive notifications of new posts by email.

SUBSCRIBE

